



# ROAD TO RECOVERY

## RFI Informational Forum

*RFI Foro Informativo*

January 7, 2026

Credit: Hugo Cobos





# Welcome

## Purpose of today's forum

- Share information about the R2R RFI
- Clarify who should respond and why
- Answer common questions





# What is this Request for Interest

## Purpose of this RFI

- Gauge Working Group interest
- Inform future funding priorities
- Tailor technical support

This RFI proceeds an RFP process.  
The RFP stage will be by invitation.





# Overview of the Grant Opportunity

- Tipping Point Species only
- Geographic scope: U.S., Canada, Latin America, and Caribbean
- Emphasis on collaborative, multi-institutional Working Groups
- Information gathering for future opportunities





# Three Tiers of Grant Support

R2R is using a tiered system to:

- Support groups in all phases of recovery
- Support progress towards recovery action
- Match funding levels to needs and capacity







## Tier 1: Developing and Organizing

**WHO:** Newly forming (or re-forming) working groups

**Example activities:** Funding for an initial kick of in-person meeting, travel support, coordination capacity

**Award size:** Up to 25,000 USD

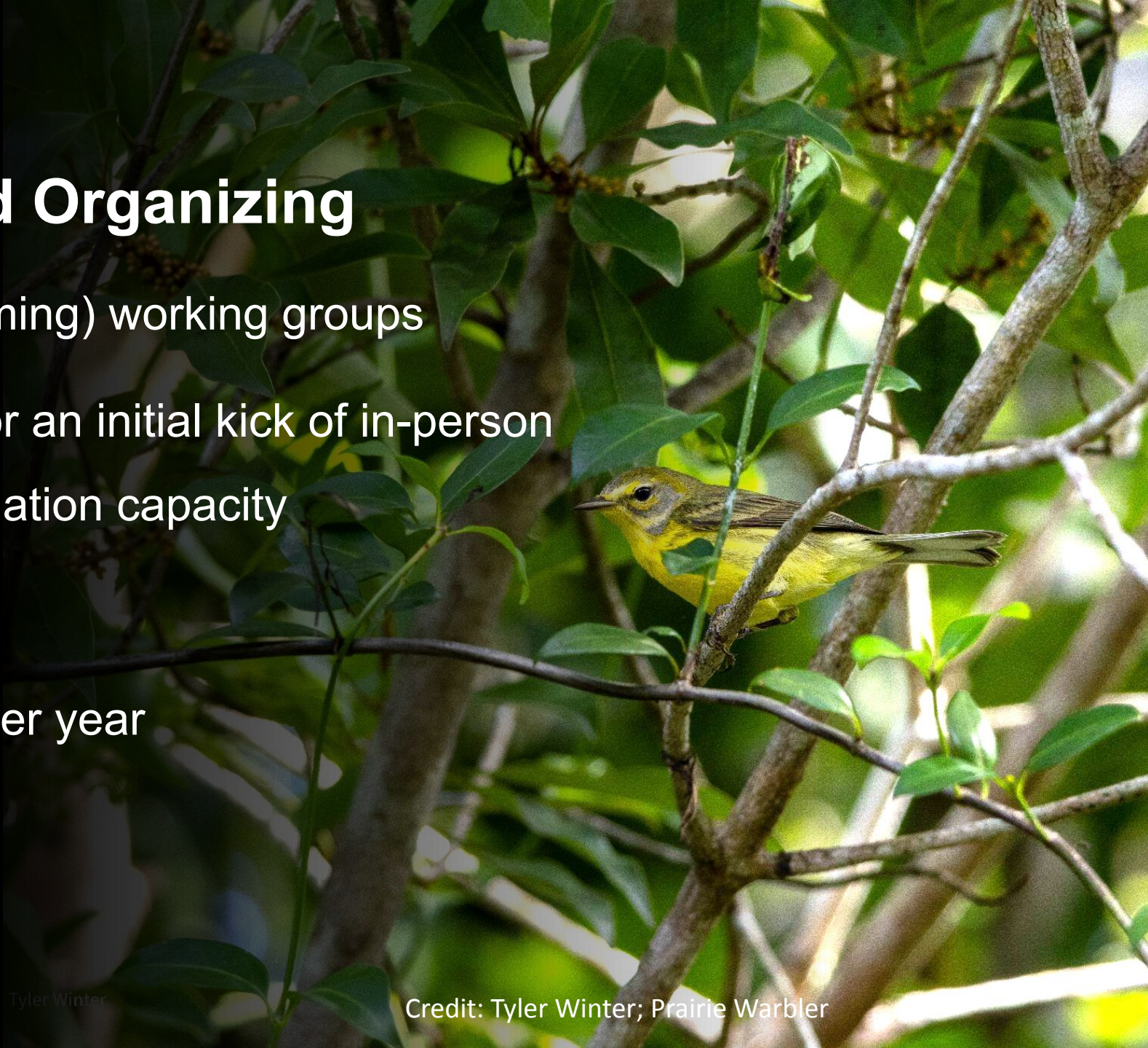
**Number of awards:** 9 total, 3 per year

**Award duration:** 1 year



Tyler Winter

Credit: Tyler Winter; Prairie Warbler







## Tier 2: Advancing Towards Recovery

**WHO:** Existing groups in need of direct coordination support to continue filling knowledge gaps

**Example activities:** Funding a coordinator, supporting limiting factor identification

**Award size:** Up to 50,000 USD

**Number of awards:** 6 total, 2 new per year

**Award duration:** 1-3 years





## Tier 3: Implementing Recovery

**WHO:** Existing groups that are ready to implement recovery action

**Example activities:** On the ground recovery work to mitigate identified limiting factors - engagement, outreach, equipment

**Award size:** Up to 100,000 USD/year

**Number of awards:** 4 awards

**Award duration:** 3 years (one base year with 2 additional years based on progress)



Credit: Kat Temple; Ruddy Turnstone





# Who is eligible to respond?

- Multi-institutional working groups
- Species eligibility by tier
  - Tier 1: All Tipping Point Species
  - Tier 2 & 3: Grassland and shorebird Tipping Point species
- Organizational eligibility (tax-exempt or government entities)





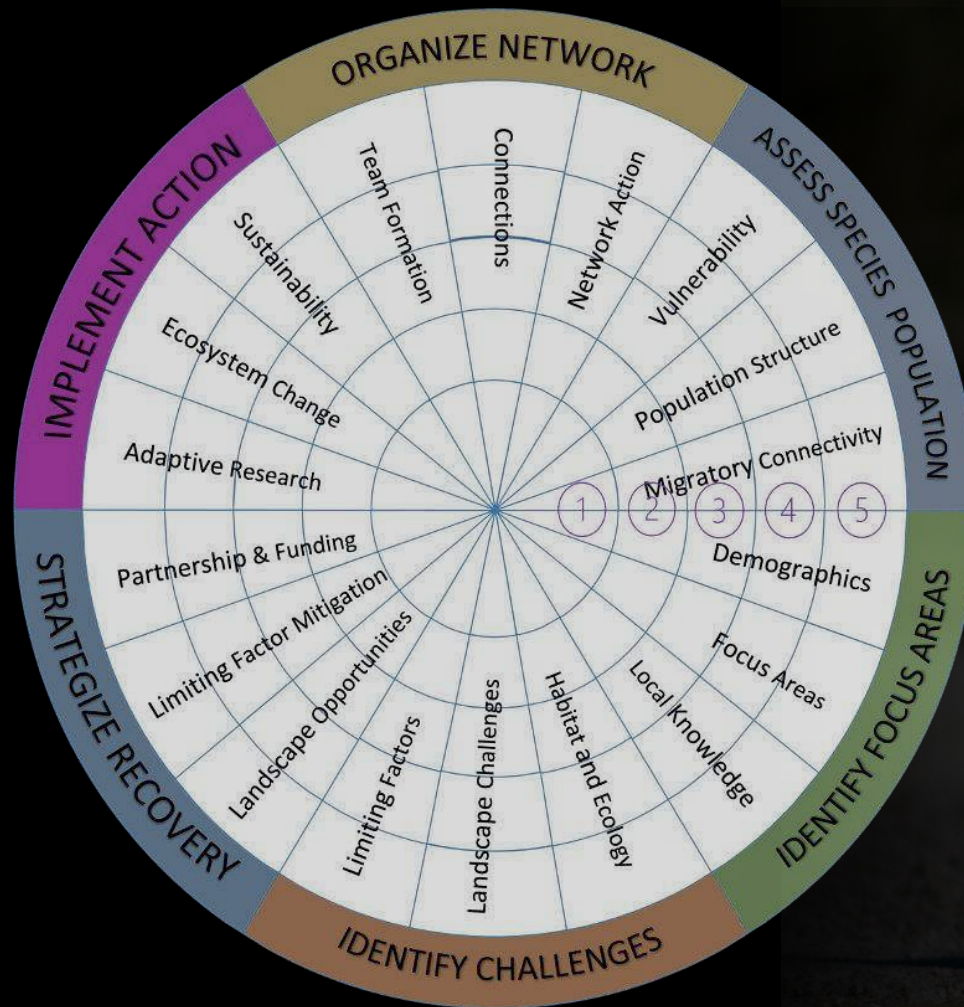
# Preference Criteria (what strengthens a response)

- Urgency of species need - red and orange alert species
- Cross-sector and cross-geography collaboration
- Integration of biological and social approaches
- Inclusivity and equitable participation





# The R2R Species Recovery Wheel



Credit: Katie Barnes; Wilson's Plover



# What Information does the RFI Request?

High-level overview of required sections

- Team overview
- Scientific factors
- Human dimensions
- Engagement with R2R framework
- Tier selection
- Needs and outcomes



Credit: David Webster, Cascadia Research Collective; Hawaiian Petrel





## Submission details and logistics

- 3 page maximum (include Wheel separately if completed)
- Submit by Jan 30, 2026 (rolling process so submit when ready)
- Email submission to [r2r@georgetown.edu](mailto:r2r@georgetown.edu)
- Follow format and submission instructions in the RFI document



Credit: Kat Temple; Prairie Warbler



# What happens after submission?

- R2R's review committee will review all submissions
- R2R will follow up with all groups
- RFP invitations will be extended to top qualifying groups
- Collaborative proposal development process with R2R





## Key dates and resources

RFI Deadline: January 30, 2026

Contact email: [r2r@georgetown.edu](mailto:r2r@georgetown.edu)

All groups can expect a response from R2R by Spring 2026



Credit: Katie Barnes; Wilson's Plover





**We want to hear from you!  
Send us your questions or visit our  
website.**

[R2R@georgetown.edu](mailto:R2R@georgetown.edu)

[R2Rbirds.org](http://R2Rbirds.org)



Credit: Katie Barnes; Wilson's Plover