



TEXAS
GRASSLANDS
AND SAVANNAS
INITIATIVE

prairiepartner.org

Coastal Prairie Conservancy Initiatives For Private Grasslands Conservation



TEXAS
COASTAL
PRAIRIE
INITIATIVE

prairiepartner.org

Coastal
Prairie
Conservancy



TEXAS
COASTAL
PRAIRIE
INITIATIVE

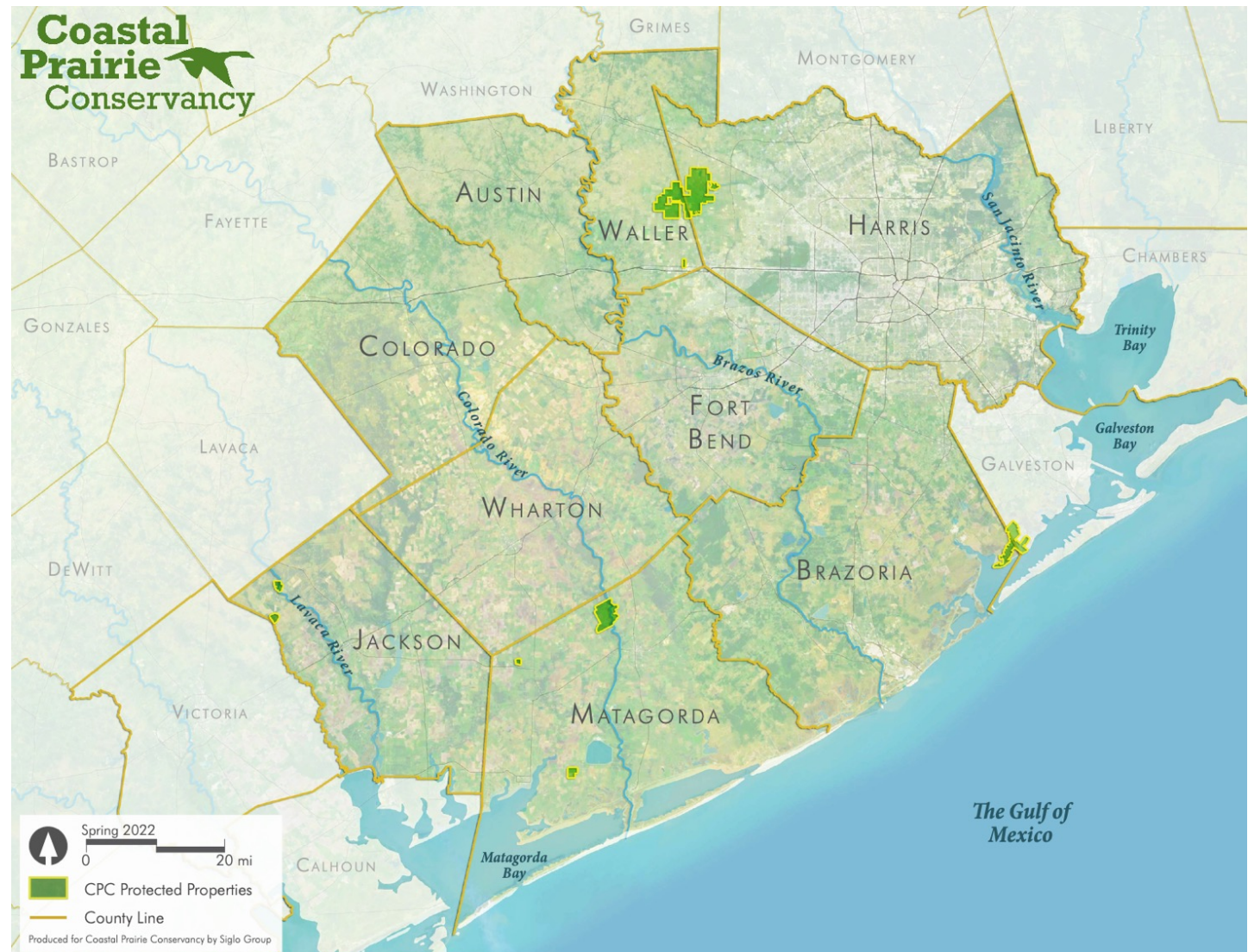


TEXAS
GRASSLANDS
AND SAVANNAS
INITIATIVE

coastalprairieconservancy.org
prairiepartner.org

Coastal Prairie Conservancy

- Formerly the Katy Prairie Conservancy
- Founded in 1992
- Accredited, nonprofit land trust
- Protecting over 32,000 acres in southeast Texas





MISSION

- Sustaining a *resilient* Texas by *preserving* coastal prairies, wetlands, farms, and ranches to benefit people and wildlife *forever*.

STRATEGIC GOAL (LAND CONSERVATION)

- Protect 5,000-20,000-acre Connected Areas to sustain imperiled Coastal Prairie Ecosystem

Coastal
Prairie
Conservancy



TEXAS
COASTAL
PRAIRIE
INITIATIVE



TEXAS
GRASSLANDS
AND SAVANNAS
INITIATIVE

coastalprairieconservancy.org
prairiepartner.org

How do we get from here....



**Coastal
Prairie** 
Conservancy



TEXAS
COASTAL
PRAIRIE
INITIATIVE



TEXAS
GRASSLANDS
AND SAVANNAS
INITIATIVE

coastalprairieconservancy.org
prairiepartner.org

... to here?



**Coastal
Prairie** 
Conservancy

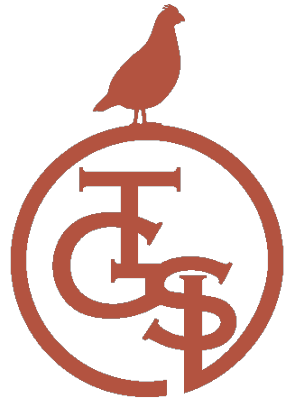


TEXAS
COASTAL
PRAIRIE
INITIATIVE



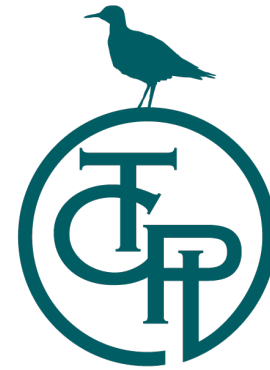
TEXAS
GRASSLANDS
AND SAVANNAS
INITIATIVE

coastalprairieconservancy.org
prairiepartner.org



TEXAS
GRASSLANDS
AND SAVANNAS
INITIATIVE

prairiepartner.org



TEXAS
COASTAL
PRAIRIE
INITIATIVE

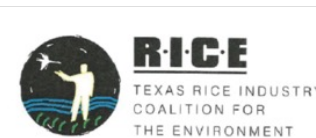
prairiepartner.org

2021: Texas Coastal Prairie Initiative (TCPI) CPC + 24 partner organizations



coastalprairieconservancy.org
prairiepartner.org

2023: Texas Grasslands and Savannas Initiative (TGSI) CPC + 19 partner organizations + WHF



NRCS Easement Funding

- TCPI: \$4,690,000 million through 2026
- TGSI: \$16,850,000 through 2028
- NRCS funds will pay landowners 50% of the value of a conservation easement
- The remaining value of the easement may be donated by the landowner or additional funding must be raised



NRCS Land Management Funding

- TCPI: \$830,641 through 2026
- TGSi: \$3,000,000 through 2028
- NRCS RCPP Payment Rate for eligible practices



Priority NRCS Habitat Management Practices

- 644 - Wetland Wildlife Habitat Management
- 645 - Upland Wildlife Habitat Management
- 550 - Range Planting
- 420 - Wildlife Habitat Planting
- 528 - Prescribed Grazing
- 338 - Prescribed Burning
- 314 - Brush Management
- 315 - Herbaceous Weed Control
- 394 - Firebreaks
- 647 - Early Successional Habitat Development/Management
- 658 - Wetland Creation
- 659 - Wetland Enhancement
- 657 - Wetland Restoration
- 382 - Cross Fencing

Coastal
Prairie
Conservancy



TEXAS
COASTAL
PRAIRIE
INITIATIVE



TEXAS
GRASSLANDS
AND SAVANNAS
INITIATIVE

coastalprairieconservancy.org
prairiepartner.org

Technical Assistance to Landowners & Producers

Technical Assistance (TA) Partners Help landowners and producers register with FSA, prepare conservation plan, design and implement practices



**Coastal
Prairie** 
Conservancy



TEXAS
COASTAL
PRAIRIE
INITIATIVE



TEXAS
GRASSLANDS
AND SAVANNAS
INITIATIVE

coastalprairieconservancy.org
prairiepartner.org



**Conservation
Planning**

*Use Existing
Plans*

*Identify Priority
Zones*

Outreach

*Regional
Conference*

*Restoration
Roundups*

*Landowner
Workshops*

**Prioritization
and Selection**

*Conservation
Easements*

*Habitat
Management*

**Implemen-
tation**

*Conservation
Easements*

*Habitat
Management*

Reporting

*Species
Monitoring*

*Social
Outcomes*

Other Research

Frameworks and action plans for protecting bird populations and their habitats.

Conservation Planning

<p>Working Lands for Wildlife - Great Plains Grasslands Biome Framework for Conservation Action</p>	<p>Working Lands for Wildlife - Northern Bobwhite, Grasslands, and Savannas Framework for Conservation Action</p>	<p>Audubon - North American Grasslands Birds Report</p>	<p>North American Waterfowl Management Plan - 2018 NAWMP Update</p>
<p>Gulf Coast Joint Venture - Mottled Duck Conservation Plan Update</p>	<p>Gulf Coast Joint Venture - Habitat Objectives for Priority Gulf Coast Joint Venture Shorebird Species</p>	<p>(Lehnen et al., 2024) - Management implications of habitat selection by whooping cranes (Grus americana) on the Texas coast</p>	<p>Partners in Flight - Landbird Conservation Plan: Gulf Coastal Prairie</p>
<p>Gulf Coast Joint Venture - Conservation Planning for Reddish Egret</p>	<p>Gulf Coast Joint Venture - Mottled Duck Conservation Plan</p>	<p>Gulf Coast Joint Venture - Texas Mid-Coast Initiative</p>	<p>US Fish and Wildlife Service - North American Waterbird Conservation Plan</p>
<p>Audubon - Resilience Planning for the Whooping Crane Near Matagorda Bay</p>	<p>(Grand et al., 2019) - The future of North American grassland birds: Incorporating persistent and emergent threats into full annual cycle conservation priorities</p>		

Gulf Coast Joint Venture: Texas Mid-Coast Initiative

Conserving Gulf Coast habitats is critical to the overall success of the NAWMP because the same practices and actions that benefit waterfowl and other migratory birds also benefit the many other species that share the same habitats. The primary goal of the GCP is to provide habitat for waterfowl and other migratory birds, but also to provide habitat for other species that share the same habitats. The GCP is designed to maximize the overlap of benefits between the species groups. This plan update will add to the GCP by providing a framework for working with the local to regional level and will include the following components: waterfowl and other migratory birds, waterfowl and other migratory birds, waterfowl and other migratory birds, waterfowl and other migratory birds.

Implementation of 3 Key Goals

Key Goal 1: Increase the amount of land in the GCP region that is managed for waterfowl and other migratory birds. 27% increase in land in the GCP region that is managed for waterfowl and other migratory birds.

Key Goal 2: Increase the amount of land in the GCP region that is managed for waterfowl and other migratory birds. 27% increase in land in the GCP region that is managed for waterfowl and other migratory birds.

Key Goal 3: Increase the amount of land in the GCP region that is managed for waterfowl and other migratory birds. 27% increase in land in the GCP region that is managed for waterfowl and other migratory birds.

2015 PRAIRIE CONSERVATION ASSESSMENT Greater Houston

Greater Houston Prairie Conservation Assessment 2015

Gulf Coast Joint Venture - Texas Mid-Coast Initiative

Map showing the Gulf Coast Joint Venture region in Texas, highlighting the Mid-Coast Initiative area. The map includes labels for various counties and cities, and a legend for the different zones.

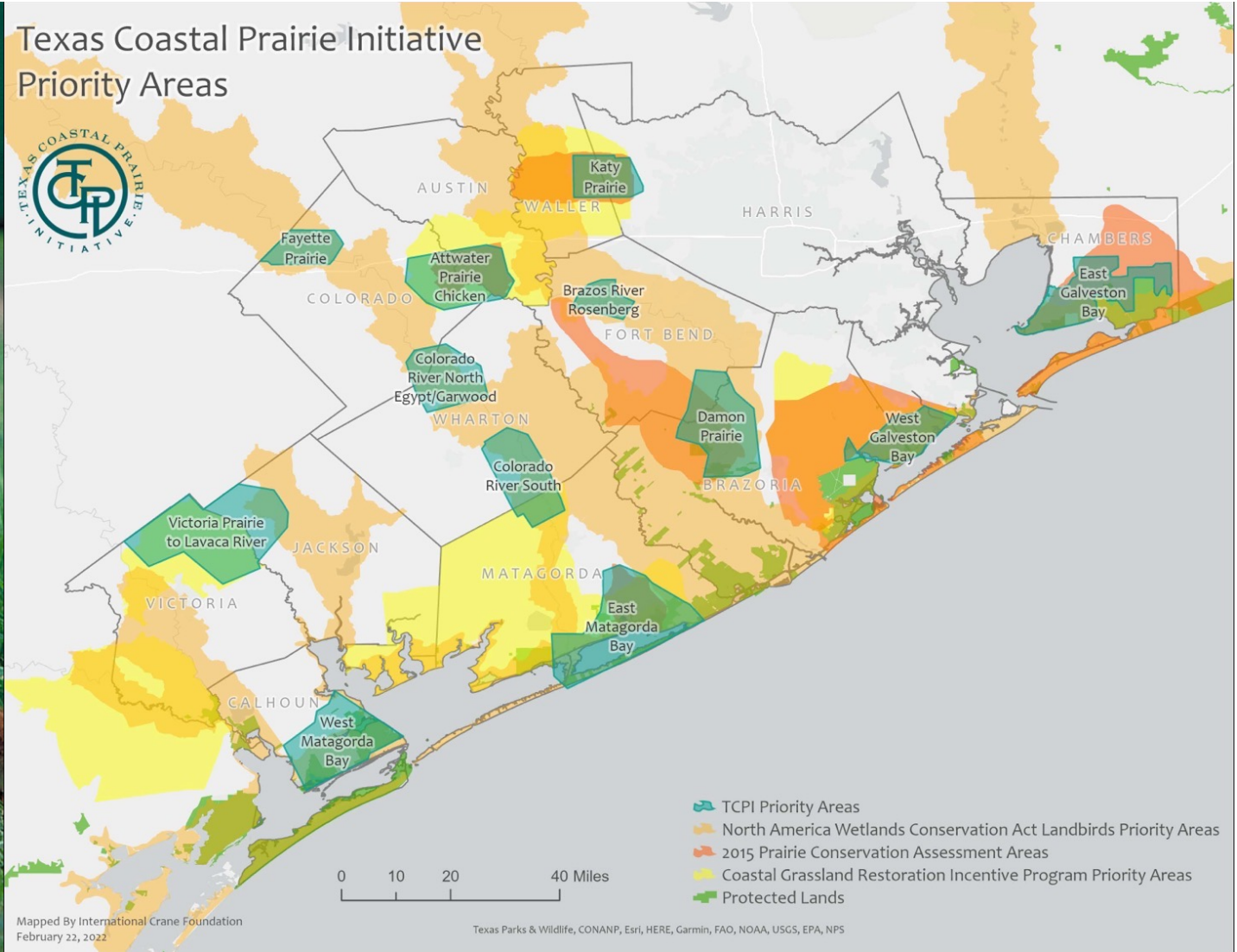
Map showing the Priority Prairie Acquisition Zones in the Houston area. The zones are numbered 1 through 6, and the map includes a legend for the different zones.

PRIORITY PRAIRIE ACQUISITION ZONES

ZONE	LOCATION
1	Katy Prairie
2	Atchafalaya Prairie Chicken NWR
3	Matagorda Prairie
4	Damon Prairie
5	West Bay Prairies & Marshes
6	East Bay Prairies & Marshes



Texas Coastal Prairie Initiative Priority Areas



Mapped By International Crane Foundation
February 22, 2022

Texas Parks & Wildlife, CONANP, Esri, HERE, Garmin, FAO, NOAA, USGS, EPA, NPS



PRESERVING THE TEXAS GRASSLANDS AND SAVANNAS

OVERVIEW

Grasslands and savannas are rich ecosystems, serving as home for a quarter of the world's population and habitat for diverse wildlife. They also offer critical benefits for people and nature by storing carbon, supporting agriculture, and providing recreational and quality of life benefits. Through the **Texas Grasslands & Savannas Initiative**, the Coastal Prairie Conservancy and its partners are providing funding to private landowners to permanently protect their lands through **conservation easements**, and provide funding to help land owners **manage and enhance habitat** on private lands. This initiative, funded through an award from the National Resources Conservation Service, focuses on the Coastal Prairie and Post Oak Savanna ecoregions that are threatened by increased development. The program helps private landowners preserve essential grassland bird habitat and promote the presence of pollinators, enhancing the overall biodiversity of these vital ecosystems. Conserving these lands today means safeguarding the rich biodiversity and cultural legacy of Texas for tomorrow.

SAVING LAND AND STRENGTHENING AGRICULTURE

Well-managed grazing by cattle can improve soil health and support biodiversity. Grazing practices that allow for proper rest and recovery periods not only increase the productivity of lands to support cattle, they also create a mosaic of habitats that benefit wildlife. Landowners may implement sustainable grazing practices such as controlling brush, adding cross-fencing, or developing a grazing plan that can protect the land and its natural resources. These actions help local ranchers stay in business and also protect local food supplies.

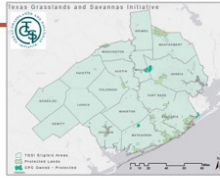


TGSI PARTNER ORGANIZATIONS

- AUDUBON OF TEXAS
- BAYOU LAND CONSERVANCY
- COASTAL PRAIRIE CONSERVANCY ENVIRONMENTAL INSTITUTE OF HOUSTON AT UNIVERSITY OF HOUSTON-CLEAR LAKE
- GUADALUPE-BLANCO RIVER TRUST
- GULF COAST JOINT VENTURE
- HARRIS COUNTY PRECINCT 4
- HARRIS COUNTY FLOOD CONTROL DISTRICT
- HOUSTON-GALVESTON AREA COUNCIL
- HOUSTON WILDERNESS
- NATIVE PRAIRIES ASSOCIATION OF TEXAS
- THE NATURE CONSERVANCY
- TEXAS AGRICULTURAL LAND TRUST
- TEXAS A&M NATURAL RESOURCES INSTITUTE
- TEXAS COALITION OF RURAL LANDOWNERS
- TEXAS LAND CONSERVANCY
- TEXAS PARKS & WILDLIFE DEPARTMENT
- TEXAS RICE INDUSTRY COALITION FOR THE ENVIRONMENT
- YARDSTICK
- TGSI PLANNING ASSISTANCE
- WILDLIFE HABITAT FEDERATION

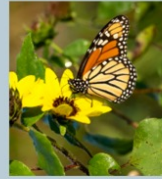
WHY CONSERVING THIS REGION MATTERS

The coastal prairies, savannas, and grasslands of Southeast Texas are critical ecosystems that were historically managed by bison and periodic fire. These landscapes not only embody the spirit and history of our state but also provide essential habitats for wildlife – from migratory birds to native plant species. Over the years following European settlement, these lands have been significantly altered by development of rural homes and conversion of native grasslands to croplands or "improved" pasture. The surviving tallgrass prairie and post oak savannas are dwindling in number and under threat from increasing land fragmentation and rapid development. These wide open spaces, once abundant, are becoming rarer with each passing day. Because over 95% of these grasslands are in private hands, the best hope for conserving these ecosystems is to combine productive ranching with wildlife conservation. Private landowners are instrumental in ensuring these lands are permanently protected for future generations, preserving a vital part of Texas heritage.



Benefiting A Critical Ecosystem

Pollinators like bees and butterflies are vital for healthy ecosystems. Native grasslands support a diverse array of wildflowers that provide essential nectar and habitat for these important species. The conservation of these lands ensures the survival of pollinators and the plants that support people and wildlife, improving the ecosystem health of Texas communities. Maintaining these green spaces is crucial for the well-being of our communities, offering natural areas for recreation, reflection, and connection with nature.



GRASSLAND BIRDS

Grasslands are home to many bird species, including Bobwhite Quail and Meadowlarks. Resident and migratory birds rely on grassland habitats for nesting and feeding, but their populations are declining due to habitat loss. Private landowners play a critical role in preserving these habitats, ensuring that grassland birds have the space they need to thrive.

HOW TO APPLY?

Please contact info@coastalprairieconservancy.org or fill out the contact form on prairiepartner.org. We will contact you with next steps.



This material is based upon work supported by the U.S. Department of Agriculture, under Regional Conservation Partnership Program Supplemental Agreement number 2024-SA-1605. Any opinions, findings, conclusions, or recommendations expressed in this publication are those of the author(s) and do not necessarily reflect the views of the U.S. Department of Agriculture. In addition, any reference to specific brands or types of products or services does not constitute or imply an endorsement by the U.S. Department of Agriculture for those products or services. USDA is an equal opportunity provider and employer.



Preserving the Natural Heritage of Texas Farms and Ranches

The Texas Coastal Prairie Initiative (TCPI) and the Texas Grasslands and Savannas Initiative (TGSi) are regional initiatives that provide funding to private landowners to conserve farms, ranches, and natural areas. Funding is available for Conservation Easements and Habitat Management Practices.

Apply for Funding TODAY!

Connect with the Coastal Prairie Conservancy or a TCPI/TGSI partner organization at:

✉ TCPI-info@coastalprairieconservancy.org
☎ (713) 523 - 6135

ELIGIBILITY

Farmers, ranchers, and landowners who own natural or agricultural lands in the following regions may be eligible: Austin, Brazoria, Calhoun, Chambers, Colorado, DeWitt, Fayette, Fort Bend, Galveston, Gonzales, Grimes, Harris, Jackson, Lavaca, Matagorda, Montgomery, Victoria, Waller, Washington, and Wharton Counties.

Scan the QR code or visit prairiepartner.org for more information.



FUNDING OPPORTUNITIES

Landowners and Producers will work with a TCPI/TGSI Partner to determine eligibility for funding programs:

CONSERVATION EASEMENTS

Landowners may enter voluntary conservation easements with a qualified land trust to permanently protect their private lands, which they may continue to use for agricultural uses, such as cattle grazing, or recreational uses, such as hunting. Funds would pay landowners 50% of the appraised value of a conservation easement.

HABITAT MANAGEMENT

Landowners may receive free assistance to develop plans to enhance and improve wildlife habitat. Funds are available to reimburse private landowners most of the cost of beneficial practices, such as brush control, prescribed fire, or cattle cross-fencing, according to NRCS payment rates.



Ms. Katy Prairie
1234 Tall Grass Road
Rural, TX 77777



Website; Events

CONTACT



Do you want additional information?

If you would like to know more about the TGSII / TCSI or how we can help you preserve your land or adopt conservation management practices, please complete and submit the form below.

First Name (required)


Last Name (required)

Email (required)

2024 LANDS AND LEGACIES CONFERENCE



The 2024 Lands and Legacies conference will bring together landowners, students, and conservation professionals for a two-day conference on topics ranging from conservation easement funding and land management to prairie education and innovative partnerships.

 Thursday, October 24th
Friday, October 25th

 The George Ranch
10215 FM 762 Road
Richmond, TX 77469

 \$85 - General Admission
\$45 - Student Ticket

More Info at prairiepartner.org/2024conference
Sponsorship Opportunities Available



This material is based upon work supported by the U.S. Department of Agriculture, under Regional Conservation Partnership Program Supplemental Agreement number 2332-A-0651. Any opinions, findings, conclusions, or recommendations expressed in this publication are those of the author(s) and do not necessarily reflect the views of the U.S. Department of Agriculture. In addition, any reference to specific brands or types of products or services does not constitute or imply an endorsement by the U.S. Department of Agriculture for those products or services. USDA is an equal opportunity provider and employer.

Texas Grasslands & Savannas Initiative





CE Prioritization and Selection

Pre-Screening Criteria

- Vegetation Diversity and Habitat Value
- Priority Species Habitat
- Scale and Strategic Location
- Watershed Value

200 Total Points Possible		
50 max	Vegetation Diversity and Habitat Value	
40 max	Describe the presence of high priority coastal prairie habitat (native prairie, ephemeral wetland)	
	How much of the parcel is comprised of foregoing habitat?	
Score	Percent	
0	40	Never been plowed; high level of plant diversity; native tall grass prairie
0	30	Medium quality prairie; and/or significant restoration efforts in progress
0	20	Native grasslands plant community - somewhat degraded; agricultural
0	10	Significantly degraded from prior land use (grasslands or woodlands)
0	5	native plant community insignificant (e.g., croplands)
0	0	building envelopes; impervious cover
100% Total		

Describe existence of invasive species www.texasinvasives.org

10 Parcel contains little to no noxious or invasive species.
 5 Parcel includes invasive species that may be eliminated with moderate land management practice
 0 Parcel overrun with invasive species and little native habitat remains

50 max		Priority Species Habitat
Describe the presence and diversity of native species documented on the property, with an emphasis on priority species. Add the points for the indicated species; maximum 50 points possible.		
Priority habitat for one or more priority species on land or on contiguous areas with comparable habitat		
25	Attwaters prairie chicken	
15	Northern Aplomado falcon	
15	Mottled duck	
10	Sprague's pipit	
2	American goldenplover	
2	Upland sandpiper	
10	Loggerhead shrike	
5	Northern harrier	
5	Northern pintail	
15	Eastern Black rail	
5	Reddish egret	
25	Whooping crane	
15	Alligator snapping turtle	
15	Western chicken turtle	
5	Monarch butterfly	

50 max Scale and Strategic Location

Located in a target area that has been identified in a strategic conservation plan by one of the following:

20 Yes

Describe the project's connectivity with existing protected lands, both public and private

10 Contiguous to other protected lands
 7 within 1 mile of other protected lands and limited infrastructure exists to promote development
 3 Other lands are not protected, but possibility that adjoining lands may be protected in the future
 0 Nearby lands have been subdivided or developed so little opportunity for conserving adjoining lands

Size of the parcel (alone or when combined with contiguous protected lands)

10 over 2000 acres
 8 over 1000 acres
 6 over 500 acres
 4 over 250 acres
 2 over 100 acres
 0 fewer than 100 acres

Describe projected impacts of climate change and sea level rise on habitat value.

10 Land critical as inland area that will be more valuable as habitat in 100 years as a consequence of sea level rise
 5 No significant impacts relative to other areas.
 0 Land projected to be submerged in 100 years as a consequence of sea level rise

10 max Watershed Value

Are there any named waterways located within the area to be protected?

10 Includes significant frontage on named waterways within the area to be protected according to USFWS
 5 Includes minor frontage on named waterways within the area to be protected according to a USFWS
 0 No waterways within area to be protected.

40 max Other

Percentage of landowner donation

10 LO donates 50%
 6 LO donates 25%
 0 LO donates less than 25%

Is the landowner a limited resource farmer/rancher, beginning farmer/rancher, veteran farmer/rancher?

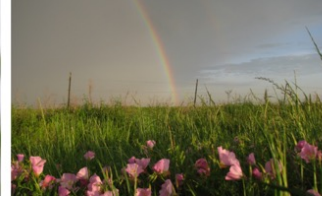
10 Yes
 0 No

Is the landowner a legacy farmer/rancher?

10 50 years
 5 25 years
 0 less than 25 years

Is the eligible entity a certified entity, or an accredited land trust?

10 Yes
 0 No



CE Implementation

Conservation Easement Project Worksheet

INSTRUCTIONS

This planning worksheet will be used to help TCPi partners review potential conservation easement projects which may be eligible for funding under the TCPi. Projects that best meet the objectives of the TCPi will be recommended for NRCS funding. Funds are subject to availability and compliance with NRCS program requirements.

- Please provide a KMZ or SHP file of property
- Please provide map showing locations of existing and planned buildings/development
- Please include representative photographs (landscape, habitat, wildlife, and/or any other relevant features discussed throughout this application)

General/Property Information

Property Owner(s) _____
 Email _____
 Phone Number(s) _____
 Property Name _____
 Physical Address _____
 City _____ County _____ ZIP _____
 County appraisal parcel number(s) _____
 Is the property owner registered with FSA? _____
 If so, please provide the FSA number: _____
 Total acreage of property(s) _____
 Acres Proposed for Conservation Easement _____
 Is the property owner a limited resource farmer/rancher, beginning farmer/rancher, veteran farmer/rancher or socially disadvantaged farmer or rancher as defined by NRCS? _____
 Is the property owner a legacy farmer/rancher? _____
 If so, how many years? _____
 (include length of ownership of current owner and prior family members)

Value and Funding

Estimated fair market value of the property: _____
 Estimated fair market value of conservation easement: _____
 How was the estimate obtained?

Landowners may request a cash payment of up to 50% of the fair market value of the conservation easement from TCPi. Requested funding from TCPi: \$ _____
 Note that an updated appraisal meeting NRCS standards is required. TCPi cash share may not exceed 50% of the fair market value as set forth in such appraisal.

Describe other funding sources or landowner donations to be used to fund remaining value of easement acquisition:

Property Uses and Infrastructure

Please describe the current uses of the property:

Crop Production: _____
 Livestock: _____
 Hunting: _____
 Wildlife Observation: _____
 Residential: _____
 Commercial or Industrial Use: _____
 Oil & Gas Production: _____
 Surface Mineral Extraction: _____
 Other: _____

List any current home(s) or other building infrastructure on the property and/or future home reservations. (Show on map if possible.)

Will the property owner retain the right to subdivide the property into different ownership? If so, please give details of the number of subdivisions. (Show on map if possible.)

Are surface minerals (e.g., sand, gravel) included or severed? _____ Are they leased? _____
 Please explain: _____

Are subsurface minerals (e.g., oil, gas) included or severed? _____ Are they leased? _____
 Please explain: _____

No surface mineral extraction may be allowed if applicant has rights to engage in subsurface mineral exploration or production; applicant must waive rights to use surface or designate surface outside of easement boundaries. If third parties control the right to engage in subsurface mineral exploration or production, applicant must demonstrate that the risk of surface activity is minimal.

Water

Are water rights retained by the property owner? _____
 Describe presence of headwaters, rivers, springs, creeks, lakes, ponds, riparian areas, or wetlands. (names, lengths, and/or area)

Landscape and Plant Diversity

Describe any permanently protected lands adjacent or nearby to property. (Please provide details of proximity and size.)

Describe presence of high priority coastal prairie habitat (native prairie, ephemeral wetlands) and quality of native flora.

Please provide an estimated acreage of habitat:

_____ acres - Highest quality native tallgrass prairie and natural prairie wetlands (prairie potholes), never been plowed, high level of plant diversity
 _____ acres - Medium quality prairie, and/or significant restoration efforts in progress
 _____ acres - Native grasslands plant community - somewhat degraded
 _____ acres - Agricultural wetlands (rice farms)
 _____ acres - High quality coastal woodlands - old growth, high diversity
 _____ acres - Grasslands - significantly degraded from prior land use
 _____ acres - Lower quality woodlands - newer growth, lower diversity
 _____ acres - Croplands other than agricultural wetlands
 _____ acres - Existing Farmstead
 _____ acres - Future Building envelopes

List any existing noxious or invasive plant species and give estimated percentage of cover. (www.texasinvasives.org)

Describe projected impacts of climate change and sea level rise on habitat value.

Wildlife Habitat Value

Describe the habitats present that can support TCPi priority species. Include any recent sightings of the priority species.

- ▶ Northern bobwhite quail: _____
- ▶ Attwater's prairie chicken: _____
- ▶ Northern Aplomado falcon: _____
- ▶ Mottled duck: _____
- ▶ Sprague's pipit: _____
- ▶ American golden plover: _____
- ▶ Upland sandpiper: _____
- ▶ Loggerhead shrike: _____
- ▶ Northern harrier: _____
- ▶ Northern pintail: _____
- ▶ Eastern black rail: _____
- ▶ Reddish egret: _____
- ▶ Whooping crane: _____
- ▶ Alligator snapping turtle: _____
- ▶ Western chicken turtle: _____
- ▶ Monarch butterfly: _____

Other

Please include a word document with any additional information not covered in this application that may be helpful for the Texas Coastal Prairie Initiative to consider. (1 page max)

Please submit to: 5615 Kaby Drive, Suite 867, Houston, TX 77005 or email to TCPi-info@coastalprairieconservancy.org

NRCS review and production planning assistance is the responsibility of the applicant and beneficiary. Projects will not be eligible for TCPi conservation easement program approval until they have been approved and accepted by the Texas Coastal Prairie Initiative. TCPi reserves the right to review and approve program applications. TCPi may choose not to recommend any application for funding or any other action based on the information provided. This material is provided as a service to the public and does not constitute an offer of any financial product or service. USDA is an equal opportunity provider and employer.



HM Implementation



Habitat Management Project Worksheet

This planning worksheet will be used to help TCPI planners understand potential habitat and management activities which may be eligible for funding under the TCPI. A conservation plan will be required prior to applying for funding for particular NRCS practices. A conservation plan may be developed together with the landowner if one does not already exist.

Landowners may be eligible to apply for funding for specific practices. Additional details regarding the planned practices and budget will be presented to TCPI partners in coordination with planner. Projects that best meet the objectives of the TCPI will be recommended for funding. Funds are subject to availability and compliance with NRCS program requirements.

INSTRUCTIONS

Please provide a KMZ or SHP file of property. Please provide map showing locations of existing and planned habitat management practices. Please include representative photographs (landscapes, habitat, wildlife, and/or any other relevant features discussed throughout this application).

General Information

Property Owner(s) _____
 Email _____
 Phone Number _____
 Property Name _____
 Physical Address _____
 City _____ County _____ ZIP _____

County appraisal parcel number(s) _____
 Total acreage of property(s) _____
 Acres Proposed for Habitat Management _____
 Is property registered with the Farm Service Agency? _____
 If so, what is the farm number? _____
 Does the landowner have a conservation plan with NRCS? If not, are they willing to develop one? _____
 Does the property have a 1-d-1 Wildlife Tax Valuation? _____

Is the property owner a limited resource farmer/rancher, beginning farmer/rancher, veteran farmer/rancher or socially disadvantaged farmer or rancher as defined by NRCS? _____
 Is the property owner a legacy farmer/rancher? _____
 If so, how many years? _____
 (include length of ownership of current owner and prior family members)

Property Uses and Infrastructure

Please describe the current uses of the property:

Crop Production: _____
 Livestock: _____
 Hunting: _____
 Wildlife Observation: _____
 Residential: _____
 Commercial or Industrial Use: _____
 Oil & Gas Production: _____
 Surface Mineral Extraction: _____
 Other: _____

Habitat Management

Check all habitat management practices of interest to landowner. (Check practice specification with the NRCS practice codes provided).

- | | |
|--|--|
| <input type="checkbox"/> 644 - Wetland Wildlife Habitat Management | <input type="checkbox"/> 394 - Firebreaks |
| <input type="checkbox"/> 645 - Upland Wildlife Habitat Management | <input type="checkbox"/> 658 - Wetland Creation |
| <input type="checkbox"/> 550 - Range Planting | <input type="checkbox"/> 659 - Wetland Enhancement |
| <input type="checkbox"/> 420 - Wildlife Habitat Planting | <input type="checkbox"/> 657 - Wetland Restoration |
| <input type="checkbox"/> 528 - Prescribed Grazing | <input type="checkbox"/> 382 - Cross Fencing |
| <input type="checkbox"/> 338 - Prescribed Burning | <input type="checkbox"/> 314 - Brush Management |
| <input type="checkbox"/> 315 - Herbaceous Weed Control | |
| <input type="checkbox"/> 647 - Early Successional Habitat Development/Management | |

Please describe reasoning/need for these practices and a proposed timeline for implementation. (one year or over multiple years)

Landscape and Plant Diversity

Describe presence of headwaters, rivers, springs, creeks, lakes, ponds, riparian areas, or wetlands. (names, lengths, and/or area)

Describe any permanently protected lands adjacent or nearby to property, both private and public. (Please provide details of proximity and size)

Describe presence of high priority coastal prairie habitat (native prairie, ephemeral wetlands) and quality of native flora.

Please provide an estimated acreage of habitat:

- _____ acres - Highest quality native tall grass prairie and natural prairie wetlands (prairie potholes), never been plowed, high level of plant diversity
- _____ acres - Medium quality prairie, and/or significant restoration efforts in progress
- _____ acres - Native grasslands plant community - somewhat degraded

Please provide an estimated acreage of habitat:

- _____ acres - Native grasslands plant community - somewhat degraded, agricultural wetlands, high quality riparian woodlands
- _____ acres - Significantly degraded from prior land use - grasslands or woodlands
- _____ acres - Native plant community insignificant - e.g., croplands, hay pasture, invasive species
- _____ acres - Future building envelopes

List any existing noxious or invasive plant species and give estimated percentage of cover. (www.texasinvasives.org)

Wildlife Habitat Value

Describe the habitats present that can support TCPI priority species. Include any recent sightings of the priority species.

- ▶ Northern bobwhite quail: _____
- ▶ Attwater's prairie chicken: _____
- ▶ Northern Aplomado falcon: _____
- ▶ Mottled duck: _____
- ▶ Sprague's pipit: _____
- ▶ American golden plover: _____
- ▶ Upland sandpiper: _____
- ▶ Loghead shrike: _____
- ▶ Northern harrier: _____
- ▶ Northern pintail: _____
- ▶ Eastern black rail: _____
- ▶ Reddish egret: _____
- ▶ Whooping crane: _____
- ▶ Alligator snapping turtle: _____
- ▶ Western chicken turtle: _____
- ▶ Monarch butterfly: _____

Other

Please include a word document with any additional information not covered in this worksheet that may be helpful for the Texas Coastal Prairie Initiative to consider. (1 page max)

Please submit to: 5615 Kirby Drive, Suite 867, Houston, TX 77005 or email to TCPI-info@coastalprairieconservancy.org

This material is based upon work supported by the U.S. Department of Agriculture, under Regional Conservation Incentives Program Supplemental Agreement Number 2012-2-0002. Any opinions, findings, conclusions or recommendations expressed in this publication are those of the authors and do not necessarily reflect the views of the U.S. Department of Agriculture. In addition, any mention of specific brands or product names of services either for credit or in reference to the U.S. Department of Agriculture for their products or services. USDA is an equal opportunity provider and employer.

NRCS practices and procedures are subject to change. The Conservation Quality Incentives program will also apply to participants in TCPI habitat management projects, and participants should be required and encouraged to follow NRCS Agency (FSA) office. Applicants do not need to demonstrate compliance with Adjutant General Wetland Regulations, as a Section 404 permit has been granted for the Texas Coastal Prairie Initiative (CPI) watershed. Applicants are required to provide a copy of the application for funding to the watershed partner at the time of application.



Conservation Easements:

Texas Coastal Prairie Initiative: 2022, 2023, 2024

Six projects are eligible for Conservation Easement Cost-Share, totaling 5398 acres, and providing for \$4,520,200 in funding to landowners.

Texas Grasslands and Savannas Initiative: 2024

Three projects are eligible for Conservation Easement Cost-Share, totaling 768 acres, and providing for \$6,231,000 in funding to landowners.

Coastal
Prairie
Conservancy

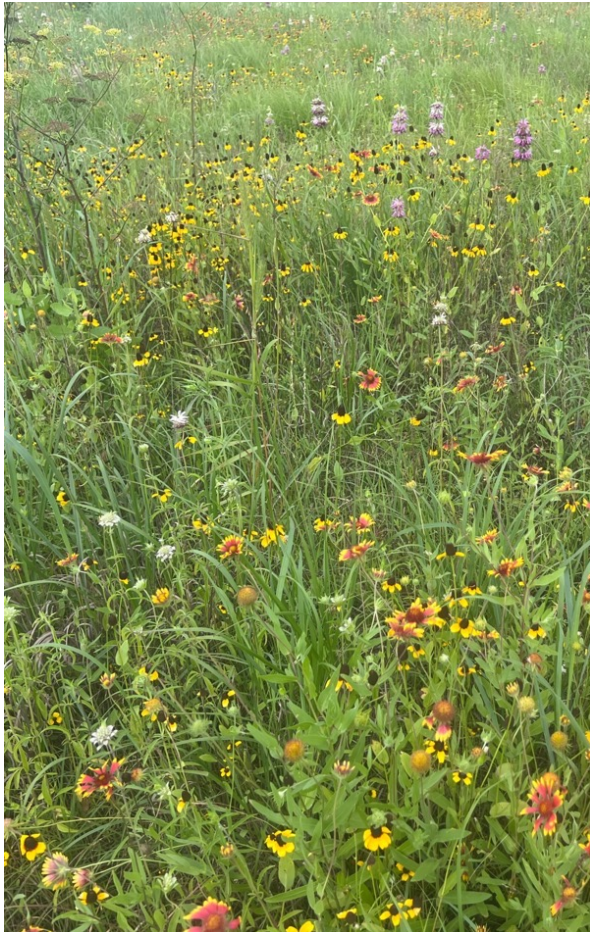


TEXAS
COASTAL
PRAIRIE
INITIATIVE



TEXAS
GRASSLANDS
AND SAVANNAS
INITIATIVE

coastalprairieconservancy.org
prairiepartner.org



Land Management:

Texas Coastal Prairie Initiative: 2022, 2023, 2024

Twenty projects are eligible for Habitat Management Cost-Share, totaling 30,398 acres, and providing for \$777,923 in funding to landowners.

Texas Grasslands and Savannas Initiative: 2024

Nine projects are eligible for Habitat Management Cost-Share, totaling 7,295 acres, and providing for \$393,002 in funding to landowners.

Photo credits: Matt Womak, Don Pine, Greg Lavaty



Elisa Donovan

Vice President & General Counsel
Coastal Prairie Conservancy

edonovan@coastalprairieconservancy.org

Coastal
Prairie
Conservancy



TEXAS
COASTAL
PRAIRIE
INITIATIVE



TEXAS
GRASSLANDS
AND SAVANNAS
INITIATIVE

coastalprairieconservancy.org
prairiepartner.org